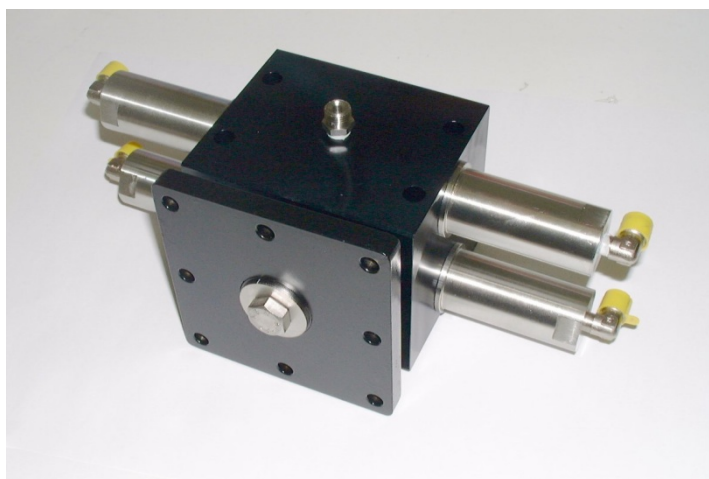


HLK-2260

180° Heavy Duty Rotary Actuator



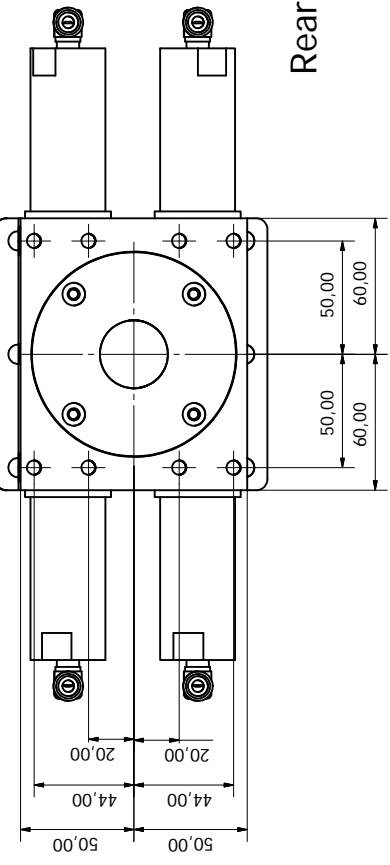
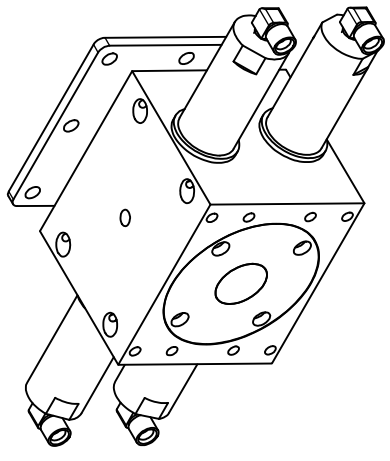
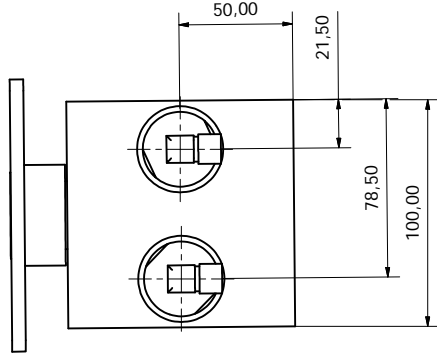
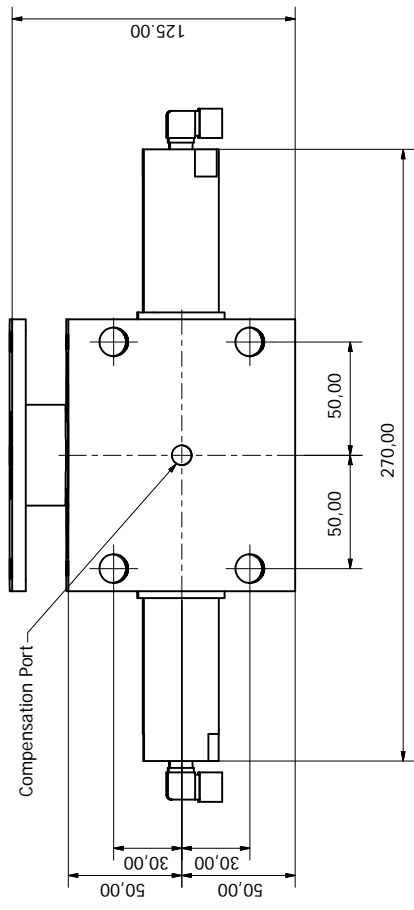
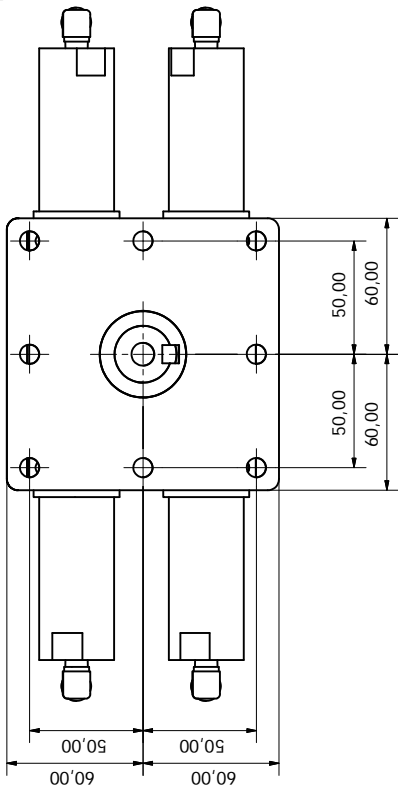
Features

- Designed to rotate manipulator arms to enable a rotating access for inspection and positioning tasks
- Different mounting plates can be fitted to accommodate a range of mounting styles
- The double rack and pinion ensures a very robust arrangement with minimum backlash

Specification:

Dimensions	Height (excluding arm mount)	125 mm
	Width	270mm
	Depth	100mm
Function	Rotation	180°
Weight	Weight in air	6.7Kg
	Weight in water	5.4Kg
Hydraulics	Pan torque	260 Nm @140 Bar
	Maximum Working Pressure	210 Bar
Construction		316 SS HE 30 Hard anodised aluminium alloy
Ports	Main	1/8" NPT - 7/16 SAE
	Compensation	1/8" NPT

Front Fixing Hole Positions



Rear Fixing Hole Positions

SPECIFICATION	
Pan Angle	180°
Max Working Pressure	210BAR
Pan Torque	260NM @ 140BAR
Height	120mm
Width	270mm + fittings
Length	100mm
Weight in Air	6.7Kg
Weight in Water	5.4Kg
Ports	NPT / SAE
Material	HE30 Aluminium - Hard Anodised 316 Stainless Steel

Designed by Alan Green	Checked by	Approved by	Date 23/07/2009
Hydro-Lek Limited, Falcon House Falcon Business Park, Ivanhoe Road Hogwood Lane Industrial Estate Finchampstead, Berks. RG40 4QQ Tel: 0118 9738903 Fax: 0118 9738915		Rotary Actuator G A	
CMR 2260/2310 GA		Sheet Edition	1 / 1