

HLK-90150

3-Phase 4.5KW Power Pack

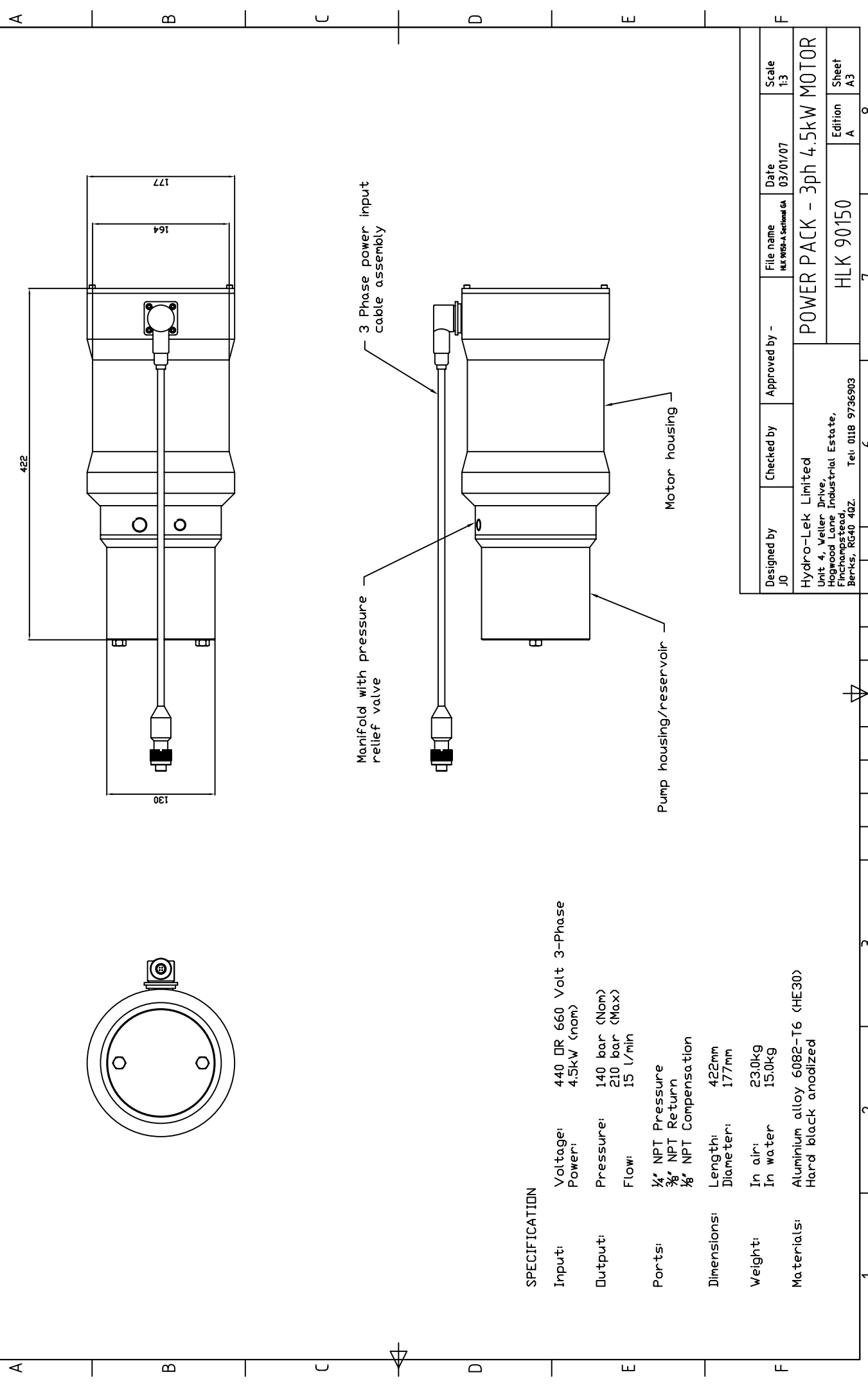


Features

- 3-phase power pack which is available as either a 440V unit or a 660V unit.
- Motor is fitted within an oil-filled, pressure-compensated housing, separate to pump/reservoir

Specification:

Dimensions	Length	422mm
	Diameter	177mm
Weight	Weight in air	23.0Kg
	Weight in water	15.0Kg
Power	Input	440/660V 3-phase 4.5KW (Nom)
	Output Pressure	140 Bar nom 210 Bar (Max)
	Output Flow	15 L/min
Ports		¼" NPT – 3/8" NPT
Construction		HE 30 aluminium Hard Black Anodised



SPECIFICATION

Input: Voltage: 440 DR 660 Volt 3-Phase
 Power: 4.5kW (nom)

Output: Pressure: 140 bar (Nom)
 210 bar (Max)
 Flow: 15 L/min

Ports: 1/4" NPT Pressure
 3/8" NPT Return
 1/2" NPT Compensation

Dimensions: Length: 422mm
 Diameter: 177mm

Weight: In air: 23.0kg
 In water: 15.0kg

Materials: Aluminium alloy 6082-T6 (HE30)
 Hard black anodized

Designed by J0	Checked by	Approved by -	File name HLK 9015-A Section GA	Date 03/01/07	Scale 1:3
Hydro-Lek Limited Unit 4, Veller Drive, Hogwood Lane Industrial Estate, Finchampstead, Berks, RG40 4GZ. Tel: 0118 9736903			POWER PACK - 3ph 4.5kW MOTOR		
			HLK 90150		Sheet A3
			Edition A		8