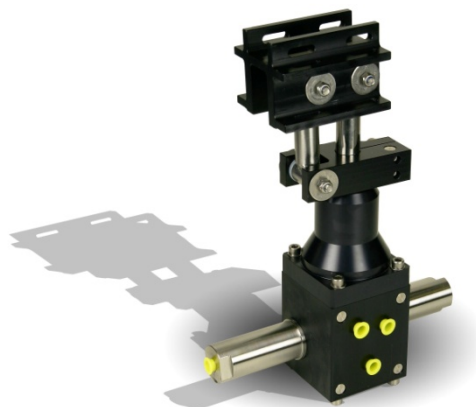


# HLK-2150

## Pan & Tilt

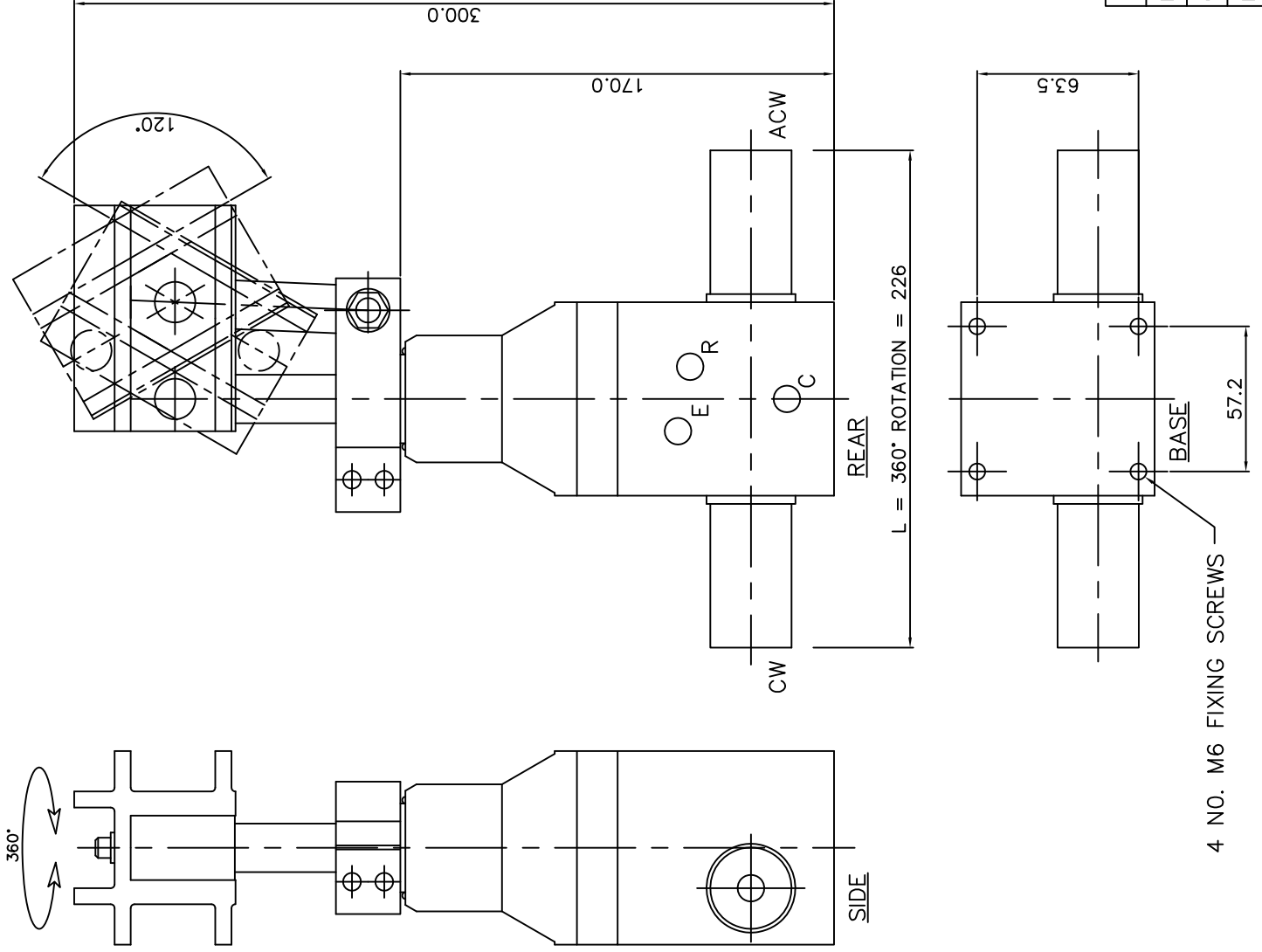


### Features

- Unique slip ring and tilt action ensures camera swept arc is kept to a minimum
- Lightweight – weighs only 4.5Kg
- Hydraulically operated

### Specification:

<b>Dimensions</b>	Height	300mm
	Width (360° rotation)	226mm
	Depth	76mm
<b>Function</b>	Pan	360° maximum
	Tilt	120°
<b>Weight</b>	Weight in air	4.5Kg
	Weight in water	3.3Kg
<b>Hydraulics</b>	Maximum Working Pressure	210 Bar
<b>Construction</b>		316 SS
		HE30 Hard Anodised Aluminium
<b>Ports</b>		7/16 SAE - 1/8" NPT - 1/4" BSP



PORTS

E = TILT EXTEND  
 R = TILT RETRACT  
 C = COMPENSATION  
 CW = PAN CLOCKWISE  
 ACW = PAN C/CLOCKWISE

SPECIFICATION

PAN ANGLE 360°  
 TILT ANGLE 120°  
 MAX. WORKING PRESS. 210 BAR  
 PAN TORQUE 100 NM  
 TILT TORQUE 120 NM  
 OVERALL HEIGHT 300  
 OVERALL WIDTH 226  
 WEIGHT IN AIR 4.5 KG  
 WEIGHT IN WATER 3.3 KG  
 PORTS 1/8" NPT - 7/16" SAE  
 MATERIALS: - HE 30 ALUMINIUM  
 316 ST. STEEL

HYDRO-LEK LTD		HLK-2150 PAN AND TILT
ISS. DATE: -	MAT: - VARIOUS	
CHKD BY: -	REV. NO: - 1	DRG. NO: - HLK 2150/DATA
DRAWN BY: - JW 18/8/99		

4 NO. M6 FIXING SCREWS