

HLK-2010C

Camera conversion Kit

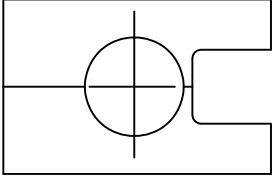
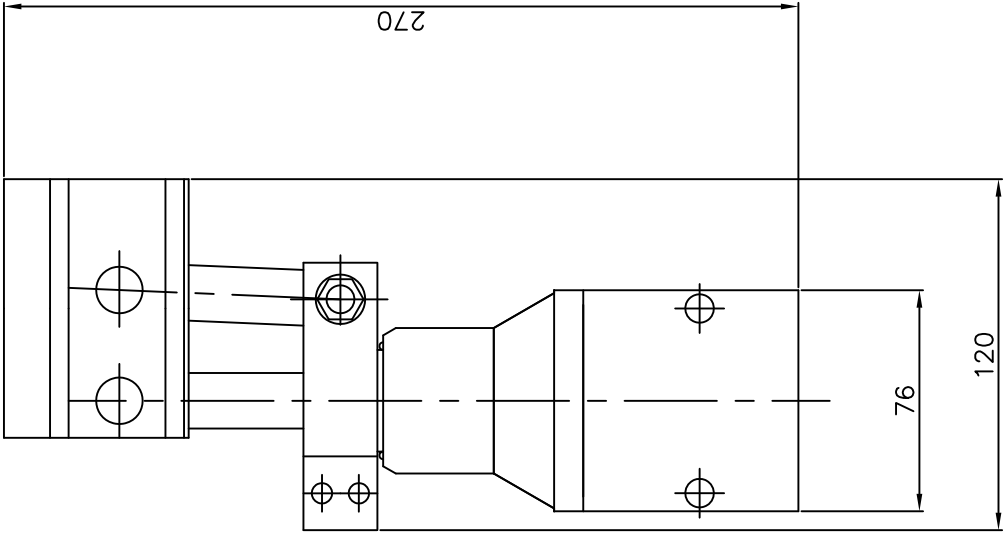


Features

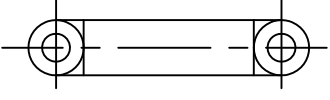
- Enables the 2010 Jaw Assembly to be converted to a simple Pan & Tilt, without the need to change the hydraulic circuits
- Can be used on either the HLK-2010 or 2020 aw Actuator to convert any arm to an inspection camera platform

Specification:

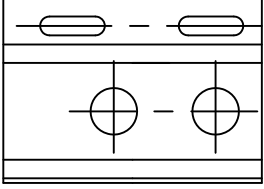
Dimensions	Length	260mm
	Width	120mm
	Height	75mm
Function	Pan	180° Continuous
	Tilt	60°
Weight	Weight in air	3.5Kg
	Weight in water	2.75Kg
Ports		1/8" NPT
Hydraulics	Maximum Working Pressure	210 Bar
Construction		316 SS
		HE30 Hard Anodised Aluminium



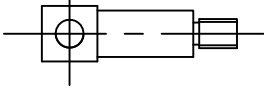
CLAMP



TILT SHAFT



CAMERA BRACKET



PAN SHAFT

SPECIFICATION

- PAN ANGLE 180°
- TILT ANGLE 60°
- MAX. WORKING PRESS. 210 BAR
- WEIGHT IN AIR 3.5 Kg
- WEIGHT IN WATER 2.75 Kg
- PORTS 1/8" NPT
- MATERIALS: - HE 30 HARD ANODISED ALUMINIUM
- 316 ST. STEEL

HYDRO-LEK LTD	HLK-2010C CAMERA CONVERSION KIT
ISS. DATE: -	MAT: - VARIOUS
CHKD BY: -	REV. NO: - 1
DRAWN BY: - JW 24/8/99	DRG. NO: - HLK 2010C/DATA